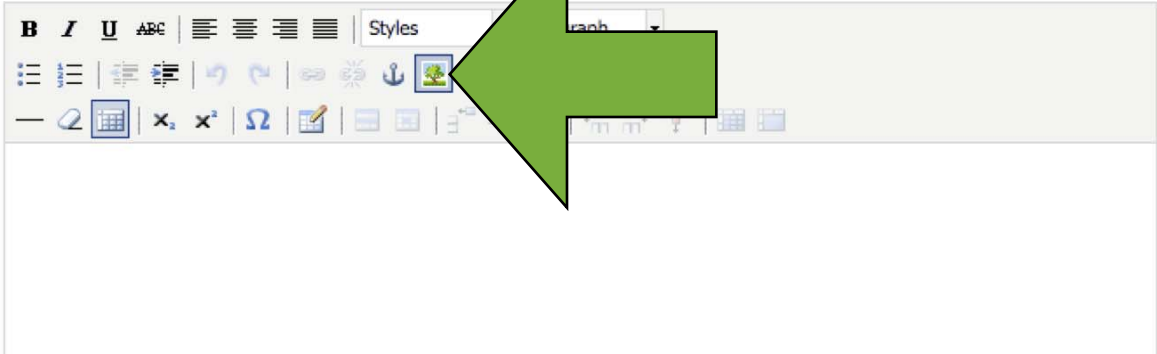


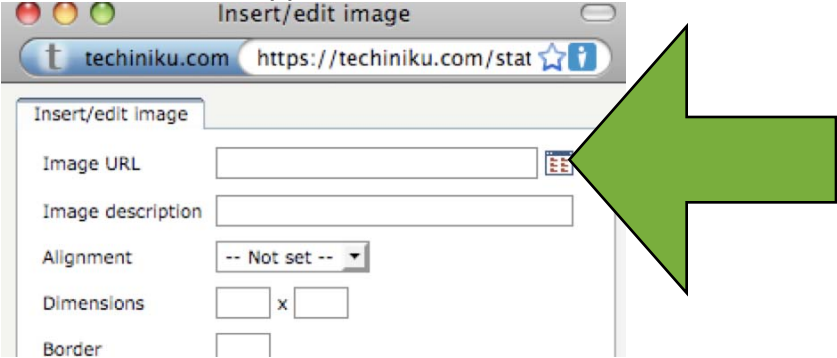
Managing Your Techniku Website

Adding a new Image to your website

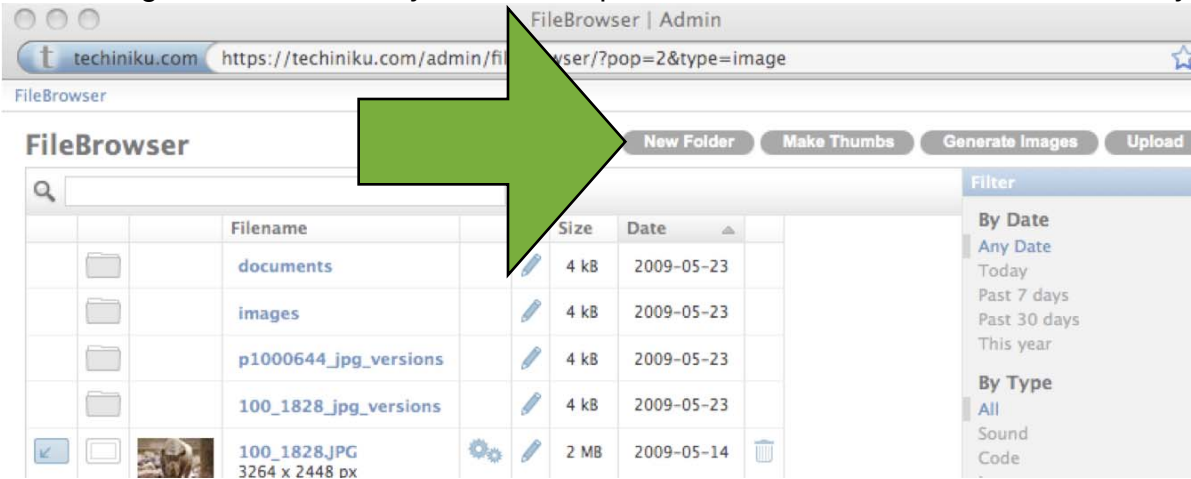
Click on *Insert/edit image* icon.



A window should appear. Click on the *Browse* icon to the right Image URL.



Give thought to which folder you want to upload to. Create a new folder if necessary.



If you clicked on **New Folder**, type in the name of your new folder.



techniku.com https://techniku.com/admin/niebrowser/mkair/r&pop=2

FileBrowser > New Folder

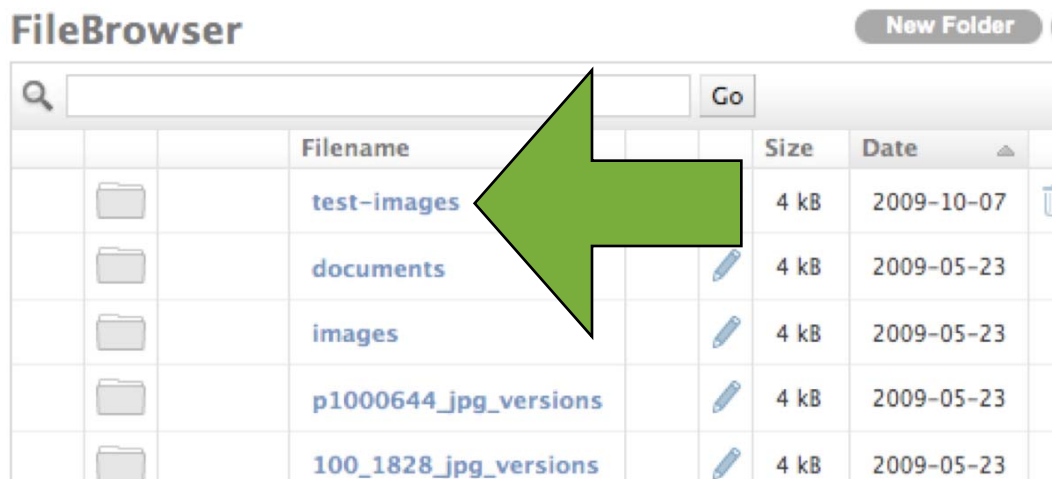
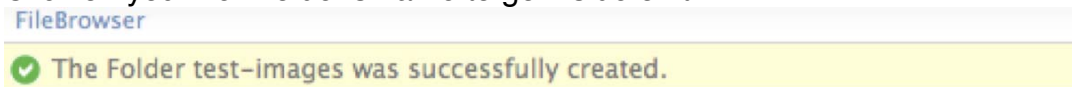
New Folder

Name

The Name will automatically be converted to lowercase. Only letters, numbers, underscores and hyphens are allowed.

Submit

Click on your new folder's name to go inside of it.



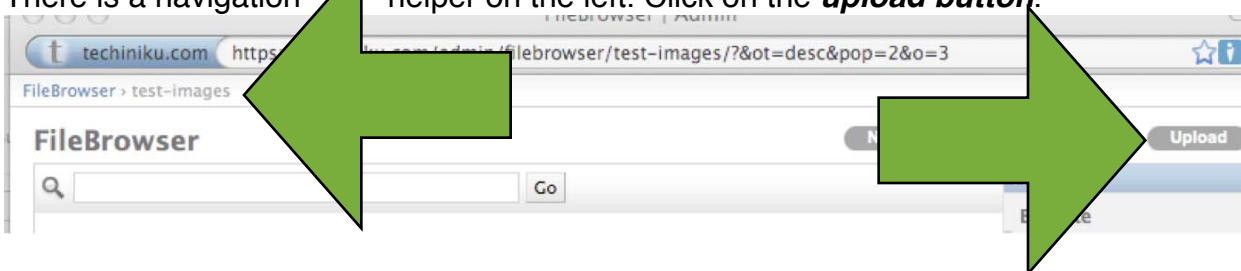
FileBrowser

New Folder

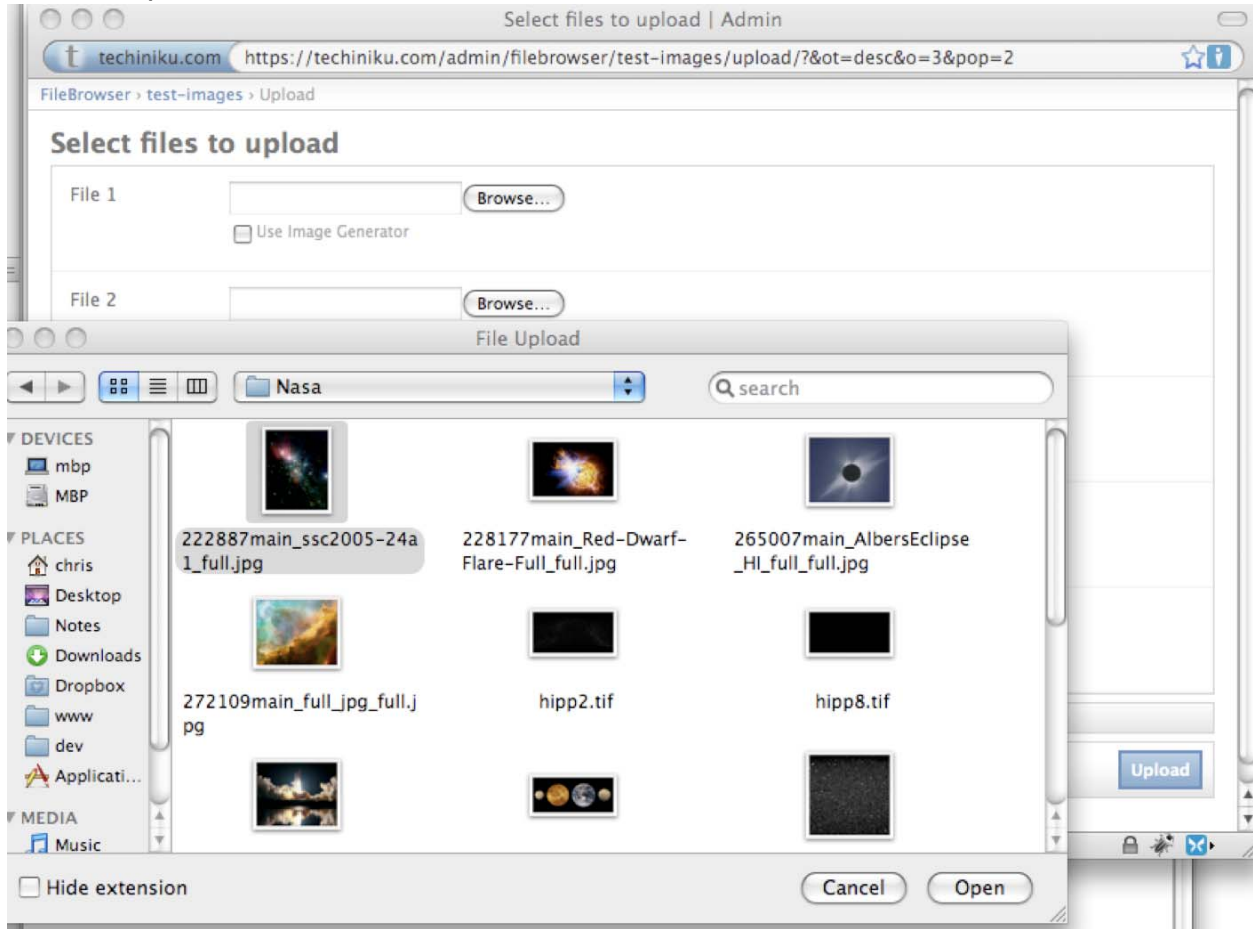
Go

	Filename	Size	Date	
	test-images	4 kB	2009-10-07	
	documents	4 kB	2009-05-23	
	images	4 kB	2009-05-23	
	p1000644_jpg_versions	4 kB	2009-05-23	
	100_1828_jpg_versions	4 kB	2009-05-23	

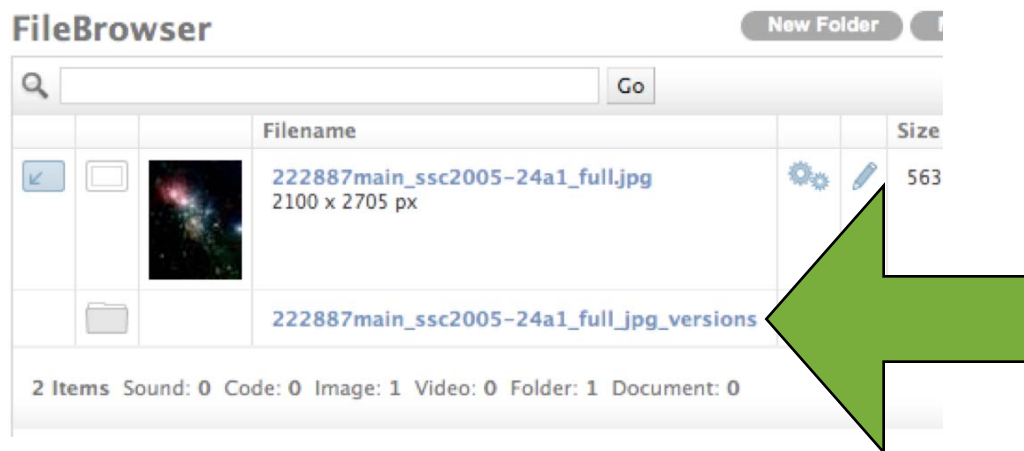
There is a navigation helper on the left. Click on the **upload button**.



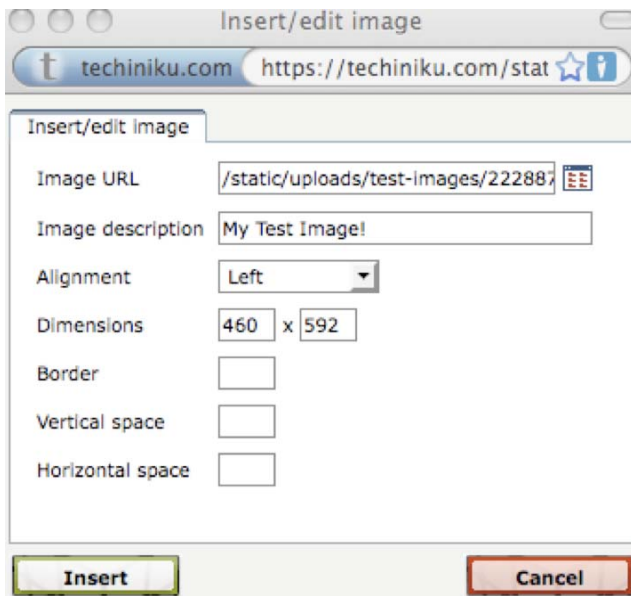
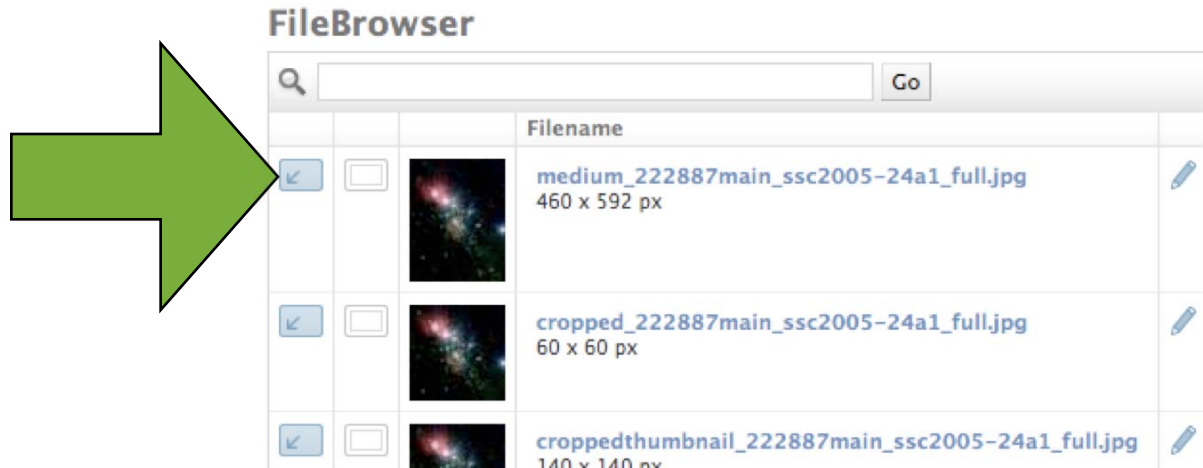
A new window will open, click on browse.
Select an image from your computer.
Check the Use Image Generator checkbox for it to resize your image for you.
Click on upload



If you want to use the a resized image, click on the ***_versions folder***.



Select the image that will fit into your page by clicking on the blue arrow. Take note of the image size. In this case it is **460 x 592 px**.



Fill in the **Image Description** field. This is very important.

You can change the alignment of your image. This image will float to the left of any text just like the image to the left.

Make sure the dimensions are the same as it was in the last step especially if you are replacing an image.

Click on **Insert**. Your image will be placed inside the editor.

